

# bimstore.co.uk

---

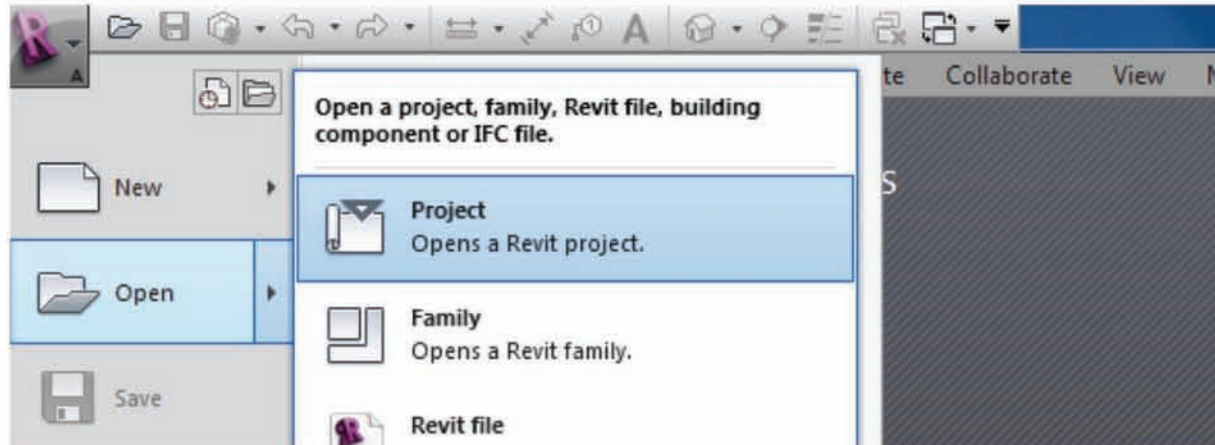
Zehnder  
Carboline  
User Guide

Version 1.0 | Revit 2013  
September 2013

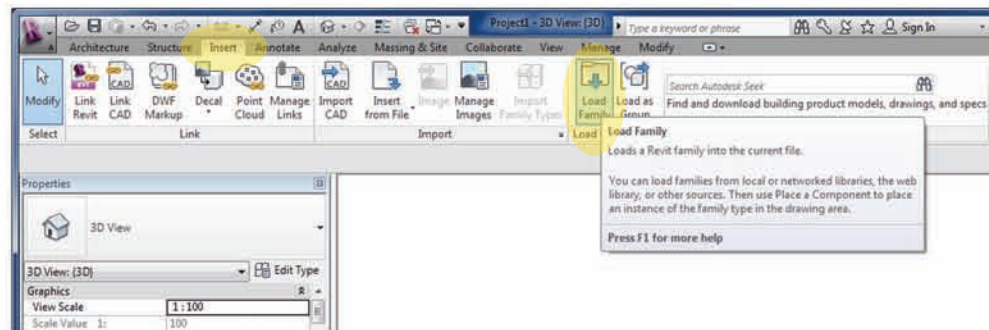
## Loading Family Components into your project

These components have been created as a family with standard configurations pre-defined as 'types'. You can add the family into your project using the following method.

1. Open the Revit file containing your 'project', and navigate to a an appropriate view.

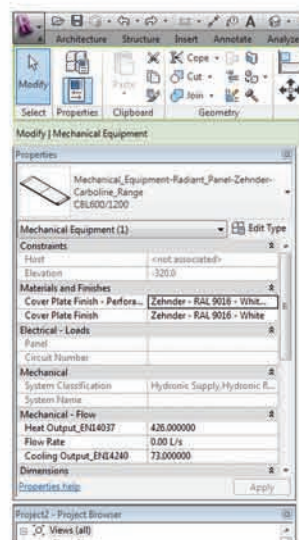


2. Now save the component that you downloaded from bimstore to your desired location on your computer (In line with your company protocols).
3. To load the component project, go to 'Insert Tab/Load Family/Select the component from your saved location' as shown below:



4. The Family is now copied & embedded into your project and can be selected from the 'Project Browser / Families / Mechanical Equipment' selector within your project BIM. (You can delete the item you added to your 'Revit Model' and the Family will remain within your Project Browser.)

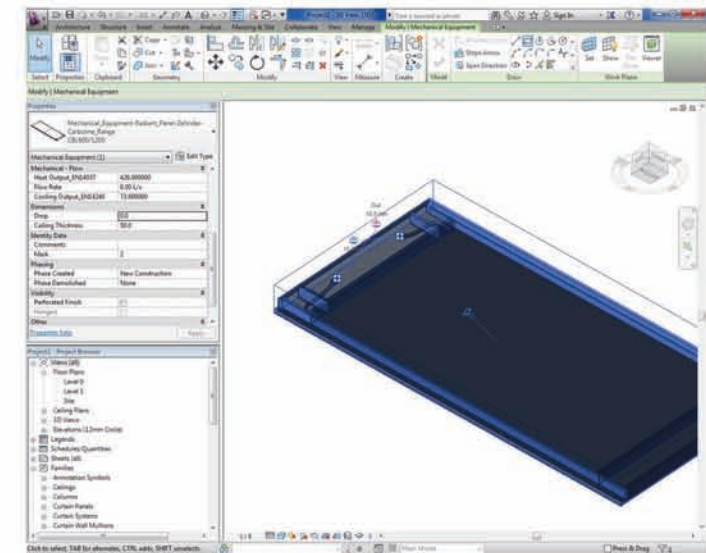
NOTE: This family has been created as a 'Faced Based' component to allow it to function correctly in a linked project



## Using the Zehnder ZIP component

Now embedded into your project the panels can be selected from either the 'Mechanical Equipment' list in the 'Project Browser' and dragged into your model or by selecting 'Components' in the 'Architecture' tab and selecting the panel from the 'Type Selector' drop down in the Properties Box'.

These components have been created as a single family with standard configurations pre-defined as 'types'. Load into your project and place on a ceiling or underside of floor (it's a Faced Based component to allow it to be used across linked building files for MEP purposes), then select the component and use the type selector to pick the type you require.



Zehnder offer a range of options for their panels and these have been built into the component. In order to access these and apply please use the following method:

1. Go to a suitable view and select the component.
2. Once the family is selected, the 'Properties' box will appear on the screen. (If hanging from floor above) Under the heading 'Dimensions' is a parameter labelled 'Drop' - adjust this dimension to suit the required drop length then click apply.
3. Also in the 'Properties' box under the heading 'Materials and Finishes' are the parameters to adjust the colours / materials of the Panels. (Panels come preloaded with RAL 9016 White) To adjust these colours / materials simply click on 'Cover Plate Finish' and change via the 'Materials Browser' and click apply. (To update to the perforated option, tick 'Perforated Finish' under the 'Visibility' heading.)

## Other Notes

This component is for design intent only and the data contained within should be treated as such. Please contact the manufacturer for more details and product literature.

You can add these family components to your company template file, they will then be available without loading when starting a new project.

## Revisions

Version 1.0 - First Issue

**bimstore.co.uk**  
content, sorted

North East  
Spaceworks  
Benton Park Road  
Newcastle upon Tyne  
NE7 7LX

T. +44 (0)191 223 6600  
F. +44 (0)191 223 6610